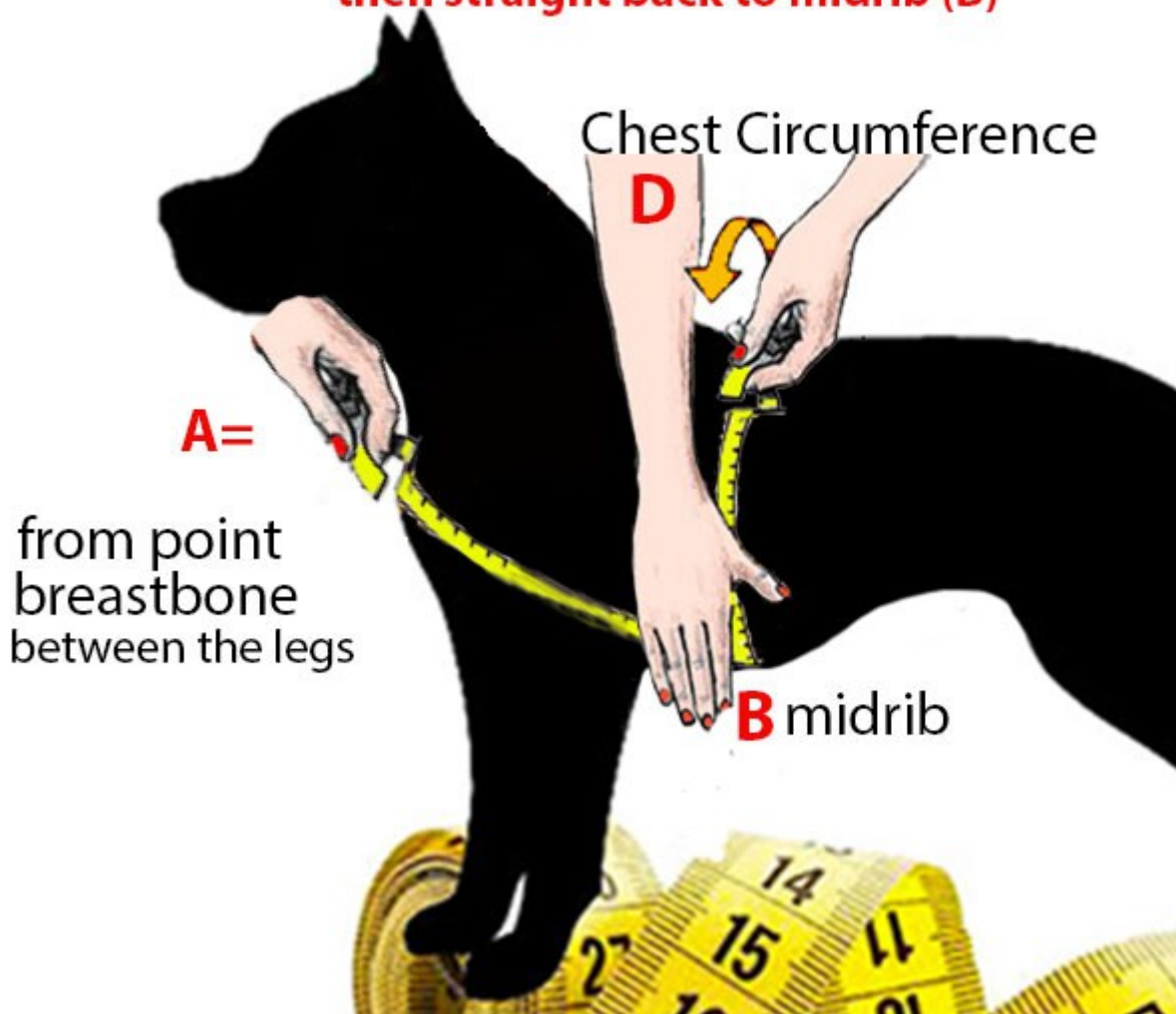


How to Measure Your Dog - 4 easy Steps

- * **Girth- the widest part of the chest**
- * **At breastbone (A), pass between front legs, then straight back to midrib (B)**



STEP 1:

A-B

Breastbone: Measure from point A (Breastbone) and go between the legs to point B (Midrib) in a straight line. **Use a flexible cloth tape measure.**

BREASTBONE: A-B	SIZE IN INCHES	SIZE IN CM
SMALL	10,43	26,5
MEDIUM	11,81	30
LARGE	13,77	35
XL LARGE	15,35	39

STEP 2:

B-D

Chest: Measure around the body of the dog with a flexible cloth tape measure. You should be starting at the bottom of the rib cage and going up and over the back and then back down to where you started.

CHEST: B-D	SIZE IN INCHES	SIZE IN CM
SMALL	22,14 – 27,16	57 – 69
MEDIUM	25,59 – 30,31	65 – 77
LARGE	29,13 – 33,85	74 – 86
XL LARGE	31,49 – 36,22	80 – 92

STEP 3:

Weight: While chest and breastbone measurements are the most accurate ways to fit a dog, our company uses weight to guide sizing. If you're having trouble getting your furry friend on the scale, weigh yourself first, then pick up your pooch and weigh the two of you together. The difference will be the weight of your dog.

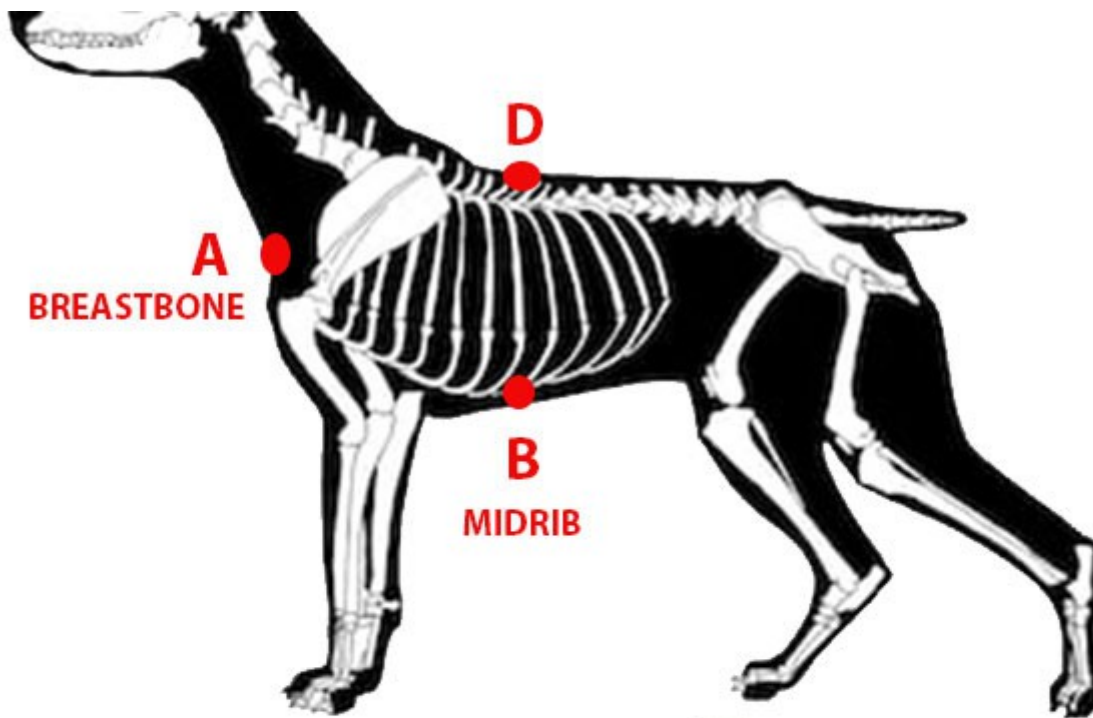
STEP 4:

Please provide us your dog's breed. It will help us and other future buyers a lot if we know your dog's breed.

That's All

Now you have done all the measurements you can select the correct size dog harness in our webshop. If you print this form you can write your measurement outcomes below:

OUTCOMES	SIZE IN INCHES	SIZE IN CM
<i>A – B</i>		
<i>B – D</i>		
<i>WEIGHT</i>		
<i>BREED</i>		



Comfort for your pet is our primary concern. By sticking with Extreme Dog Gear, you'll ensure the quality of materials is good enough, and not likely to cause discomfort or even injury to your pet. Because all dogs vary in shape, size and behaviour no two dogs will fit a harness in the same way.

Team Extreme Dog Gear
www.extremedoggear.com